

# RAFFAELE VITOLO

## TESSUTI & HOBBISTICA

Fabrics & hobby - Tissus & Loisir - Tejidos & hobby - Stoffe & hobby





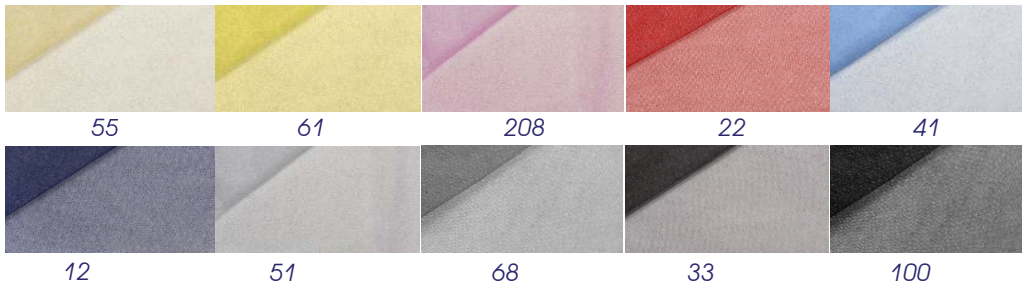
Tulle/Tull  
 8920/1 100% Polyamide  
 9 gr/mq H.300cm



Organza/Organdi  
 8918/1 100% Polyester  
 23 gr/mq H. 14 cm

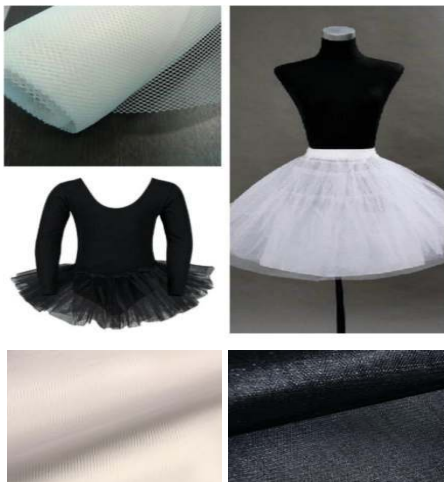


Strass Effects  
 8920/2 100% Polyester  
 30 gr/mq H. 150cm



Tulle Rigido  
 Starrer Tüll

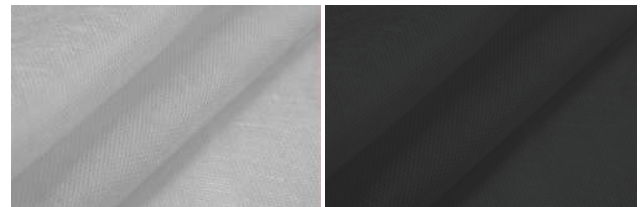
8920/3 Poliammide  
 100% 21 gr/mq H.300cm



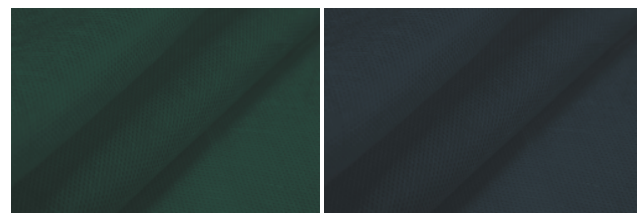
T.N.T. DECOR  
 100% Polypropylene  
 H. 160 cm 60 gr/mq

8301/1 - 1

8301/1 - 2



8301/1 - 3



8990/1  
 100% Acetato  
 100 % Acetate - 100% Acetat  
 H.140cm 61 gr/mq



8990/1 - 1  
 55% Acetato 45% Viscosa  
 55% Acetate 45% Viscose - 55% Acetat 45% viskose  
 H.140cm 59 gr/mq



8990/2  
 100% Poliestere  
 50 gr/mq H.150 cm



8990/3  
 100% Poly 120 gr/mq H.150 cm





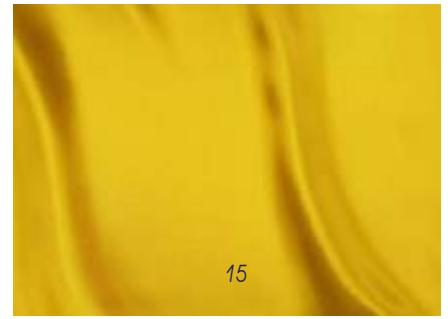
Fodera Raso Leggero  
 Light Satin Lining - Doublure en satin léger - Forro de satén claro - Leichtes Satinfutter

8990/4

100% Poliestere  
 87 gr/mq H. 150 cm



1 854 846 14



15



220 13 19 46 228 819 22 186 434 2

8990/5

Elastico  
 Elastic/Elastique  
 95% Poliestere - 5%Elastan  
 64 gr./mq H. 150



601 603 604 607 608 612

Tela Cotone

Cotton Fabric - Tissu en coton - Tela de algodón - Baumwollstoff

8912/2



700 565 500 402 900



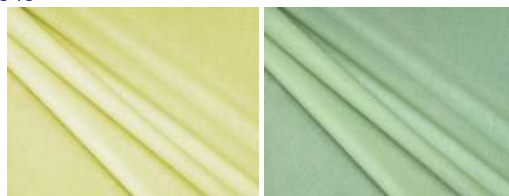
Batista 100%

8912/1 - 2 (H.90cm)  
 8912/1 - 120/1 (H.120cm)

8912/1 - 1 (H.90cm)  
 8912/1 - 120 (H.120cm)



540 22 24



26 28



Piquet



8915/1- 1



8915/1- 2



22

24



25

26

27

"Pelle Ovo Ducale"

8913/1- 1



8913/1- 2



1

2

3

4

5

Lino/Linen

8916/4

H.70 - 90 - 120 - 180 -270



Terital

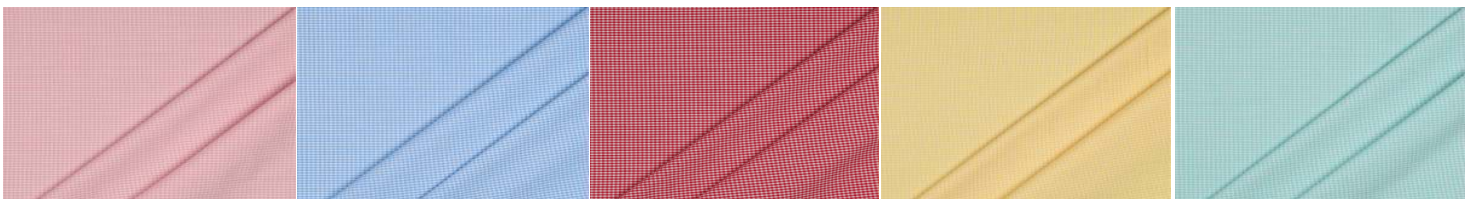
8800/1 - H.150cm

65% Polyester 35% Cotton



Zephir 100% Cotone H.150cm

8910/1



1

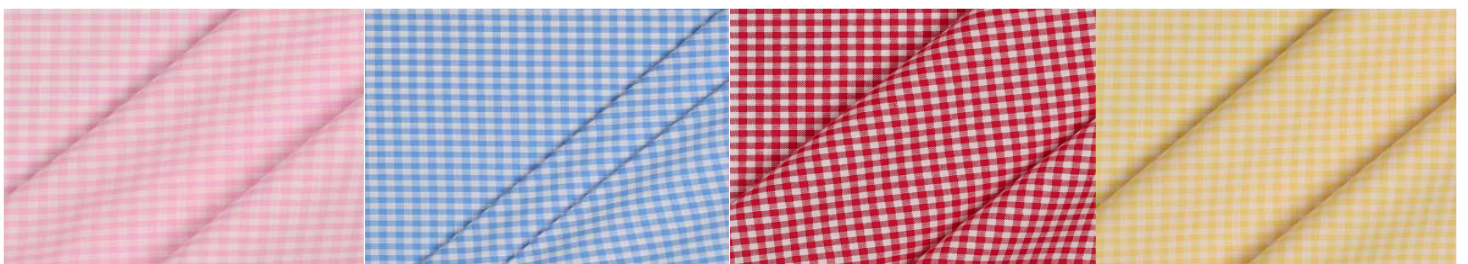
2

3

4

5

8910/2



1

2

3

4



**Tela da Ricamo**  
Needlework Fabric - Tissu à broder - Tela de bordado - Sticktuch  
**Tela Aida**  
Aida Canvas

8950/0 - 44 Fori/Holes H.150

8950/0 - 55 Fori/Holes H.180

8950/0 - 44/1



3

4

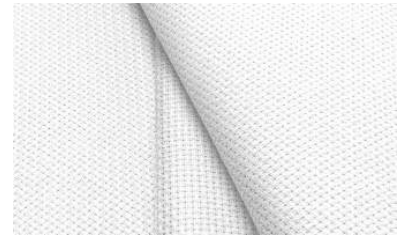
5

8950/0 - 44/2



9

10



8950/0 - 55/1 Fori/Holes H.180



**Misto Lana - Mixed Wool**  
8950/1 H.1,5 mt



1

2

3

4

5

**Tela Modelli**

**Juta**

8930/1 H.150cm 165 gr/ml

100% Cotone/Cotton/Coton/Algodon/Baumwolle



8945/1 H.140 cm

Trama larga/Weave larg 400 gr/ml



8945/2 - 1 H.150cm

Trama stretta/Weave tight 340gr/ml



**Tela Adesiva**

Adhesive Canvas - Toile Adhésif - Iona Adhesivo - Klebstoff Segeltuch

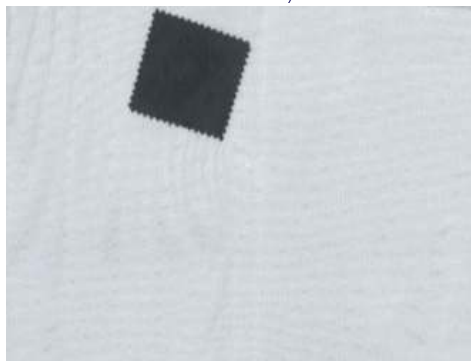
8940/3

BATISTA H.150 cm



8940/2

Jersey



8940/1

100% Cotton 17 battute/cm H.150cm



1- Bianco/White/Blanc/Blanco/Weiß  
2- Nero/Black/Noir/Negro/Schwarz

**Tela Indeformabile 100% Cotone**

H.90 cm 113 gr/mtl  
Leinwand 100% Cotton

Adesiva  
Adhesive/Adhésif/Adhesivo/Klebstoff  
**8941/2**



**8941/1 - 1**



**T.N.T per Imbottitura Resinato**  
for padding/pour rembourrage para acolchado de resina/für  
Harzpolsterung  
**8300/1**

H.150cm 100gr

**Sfioccato per Imbottitura Antiallergico**  
Hypoallergenic padding/ Rembourrage hypoallergénique  
Acolchado hipoaergénico/hypoallergene Polsterung  
**8300/2**

**Gommato**  
rubberized - caoutchouté - engomado - gummiert  
**8600/1 - 2** H.140 cm



1 Kg.

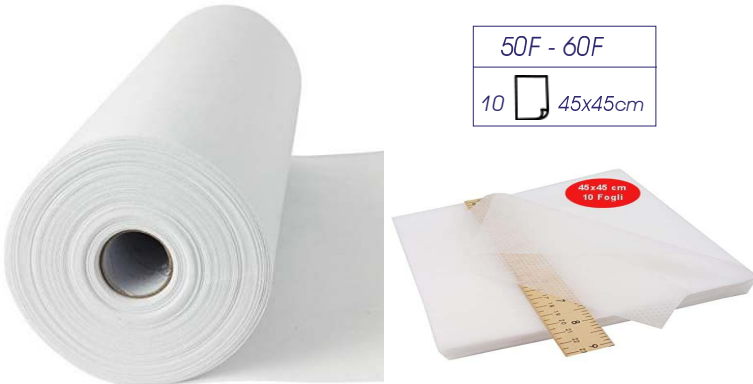


**Filcellina Stabilizzatrice a strappo Bidirezionale**

50 - 60	100mt
50R - 60R	50mt

**8102/1** H.90cm  
50gr - 60gr

50F - 60F
10 45x45cm



**Tela Aida Idrosolubile**  
Saluble Aida Canvas  
**8950/6**



**Carta per modelli** CELLULOSA EXTRA  
Template paper/Papier modèle/Papel de plantilla/Vorlagenpapier

**8101/3** 30 gr./mq



200 fogli/paper
<b>8101/3 - 1</b> 50 fogli/paper

**Film idrosolubile stabilizzatore per ricamatrici**

Water-soluble stabilizer film for embroiderers - Film stabilisateur hydrosoluble pour brodeuses  
Película estabilizadora soluble en agua para bordadoras - Wasserlösliche Stabilisierungsfolie für Sticker

**8103/1** H.100cm  
30gr - 50gr

100mt

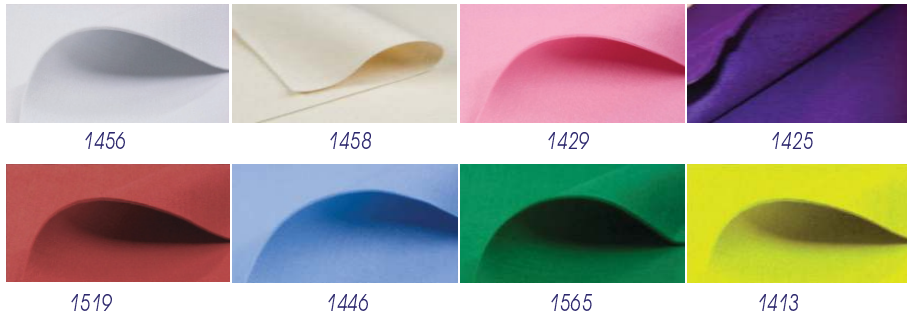
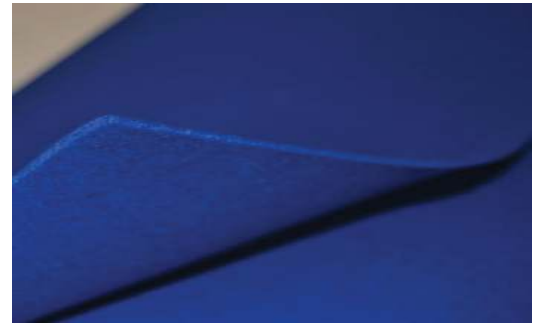




**Panno**  
Cloth Polyester Fabric  
**8919/1**  
100% Poliestere - Polyester  
180 gr/mtl H.180 cm



**Feltro**  
Feit - Se sentait - Sintió - Fühite  
**8919/3**



**Glitter**  
**8919/7**  
50x60cm



**8919/4**  
50x70cm



**8919/5**  
30x40cm



458

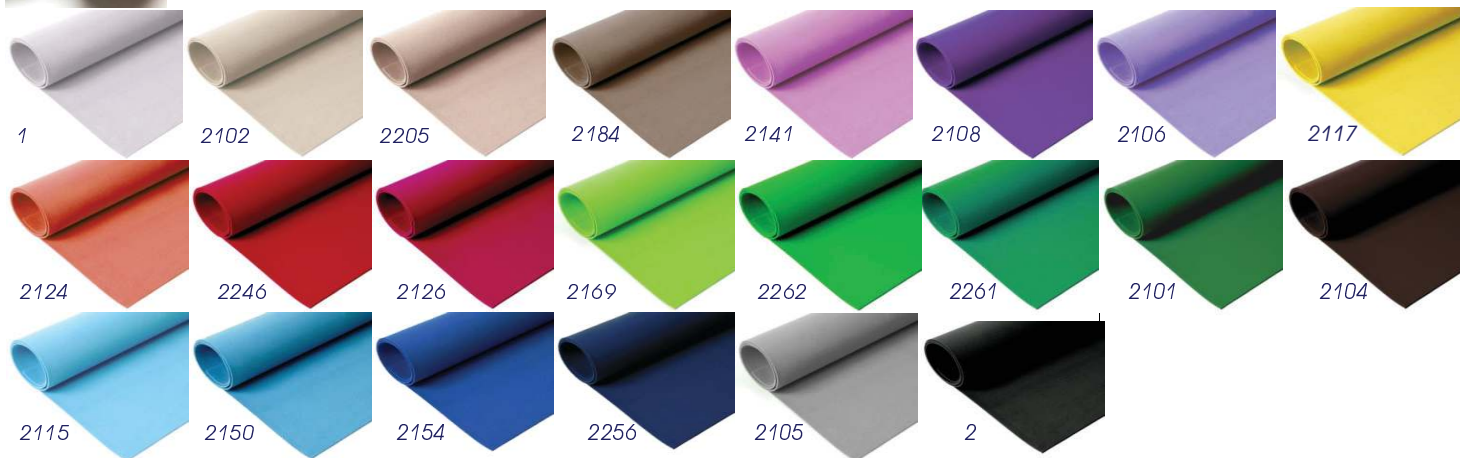




# FOAMY

8400/3 45x50 cm

51% Polietilene - 46 Carbonato di calcio



4220/5 - 1  
6 ml.

## Iri-Colours

4220/5 - 2  
24 ml.



2396/5

Glitter Spray

2396/4 - 1

Glitter Porporina  
2300/1



## Occhietti per Bambole e Puppazzi

Dolls Eyes - Yeux pour marionnettes Ojos para títeres - Augen für Puppen

1364/1

5 - 7 - 10 - 14  
mm 5x7 7x9 10x12 14x18



100pcs

1364/3

mm .5 - 7 - 10



1364/2 12mm



## Sfere di Legno per Teste di bamboline

Wooden Balls for Doll Heads - Boules en bois pour têtes de poupée Bolas de madera para cabezas de muñecas - Holzkugeln für Puppenköpfe

2372/3

mm.20 - 25 - 30 - 35 - 40



25pcs.



### Forme da Rivestire Plastica

Forms to Cover Plastic - Formulaires pour recouvrir le plastique Formas para cubrir plástico - Formen zum Abdecken von Kunststoff

No.4195 (6cm)  
No.4196 (10cm)

2372/2

No.5251 (8cm)  
No.7587 (10cm)  
No.5253 (16cm)

No.88180 (8cm)



No.5644 (9cm)



No.5645 (9cm)



No.5250 (5,5cm)



### Polistirolo da Rivestire

Polystyrene to be coated - Polystyrène à enduire - Poliestireno a recubrir - Zu beschichtendes Polystyrol

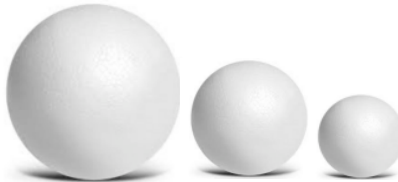
2372/1

No.78 (4x6cm) No.81 (10x25cm)  
No.79 (7x12cm) No.82 (111,5x30cm)  
No.80 (9x20cm) No.83 (14x37cm)  
No.84 (18x25cm)

No.10 (4cm)  
No.12 (6cm)  
No.14 (7cm)

No.16 (9cm)  
No.17 (12cm)  
No.18 (14cm)

No.19 (16cm)  
No.20 (20cm)  
No.21 (25cm)



No.31 (9x15cm)  
No.32 (15x25cm)  
No.33 (15x30cm)

No.110 (10cm)  
No.112 (20cm)

No.121 (7cm)  
No.122 (10cm)

No.123 (9x8,5cm)



No.135 (24cm)

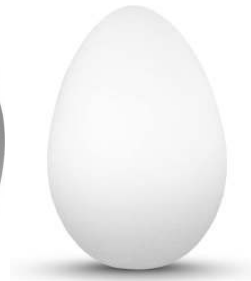
No.39 (25cm)

No.50 (15,5x22,5cm)  
No.51 (15,6x11cm)

No.49 (8x5,5cm)  
No.52 (12x8,5cm)

No.270 (9x9,5cm)

No.38 (6cm)



### Pon Pon

1373/1

100pcs

No	10	20	30
mm	10-20-30	12	20

